

Email: info@Scienzainfiore.it - PEC: amministrazione@pec.scienzainfiore.it

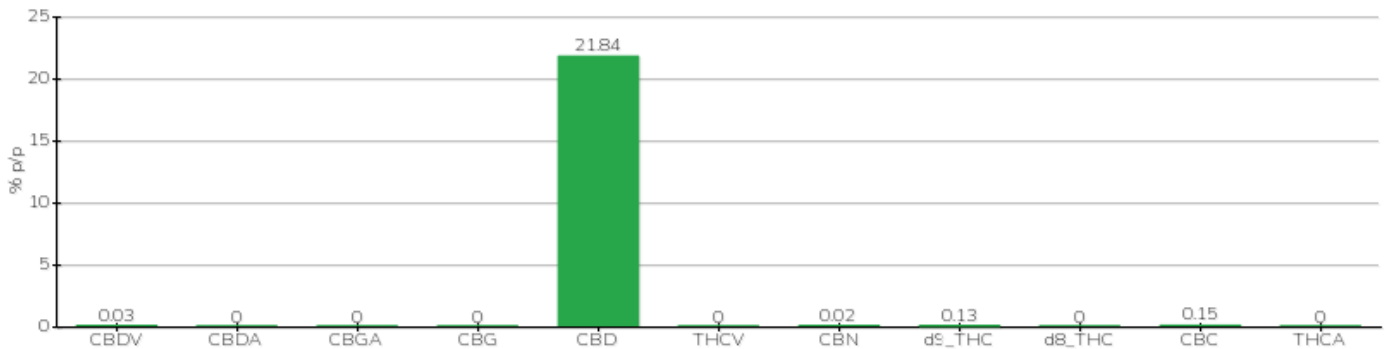
TECHNISCHER BERICHT

Klient	Crystal srl	Etikett	L0460
Datum der Annahme	02/12/2022	Typ der Probe	semilavorato
Datum der Analyse	03/12/2022	Vielfalt	NA
Interner Referenzcode	CRY0212.3	N. Karte	NA
Analytische Methode	HPLC - HS - Rev.2	Probenahme	a cura del cliente
Los			

Note

Parameter	% p/p	Methode
CBDV	0.03%	HPLC-UV
CBDA	<0.01%	HPLC-UV
CBGA	<0.01%	HPLC-UV
CBG	<0.01%	HPLC-UV
CBD	21.84%	HPLC-UV
THCV	<0.01%	HPLC-UV
CBN	0.02%	HPLC-UV
d9_THC	0.13%	HPLC-UV
d8_THC	<0.01%	HPLC-UV
CBC	0.15%	HPLC-UV
THCA	<0.01%	HPLC-UV
CBD TOTALE	21.84%	CALCOLATO
CBG TOTALE	<0.01%	CALCOLATO
THC TOTALE	0.13%	CALCOLATO

ANALYSIERTE PROBE: NA(3.00gr)



Pineto

05/12/2022