

Email: info@Scienzainfiore.it - PEC: amministrazione@pec.scienzainfiore.it



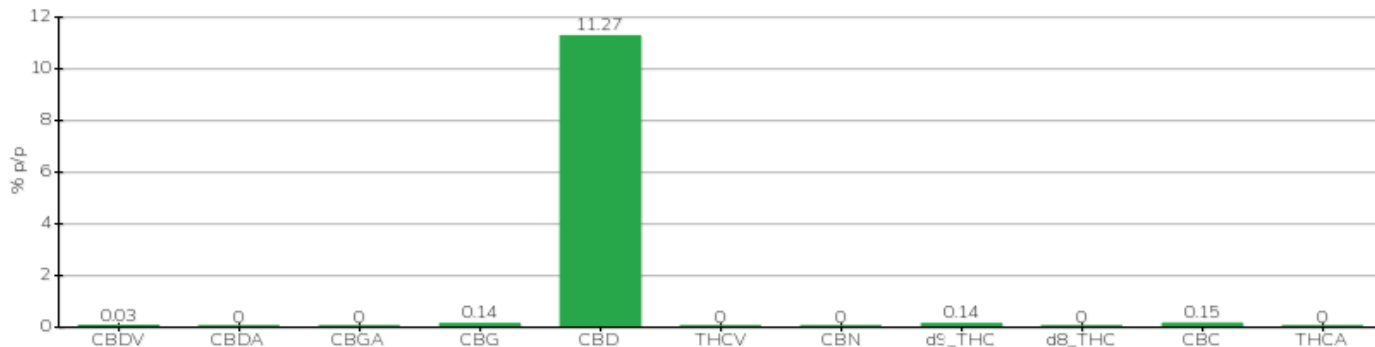
# TECHNISCHER BERICHT

<b>Klient</b>	Crystal srl	<b>Etikett</b>	L0459
<b>Datum der Annahme</b>	02/12/2022	<b>Typ der Probe</b>	semilavorato
<b>Datum der Analyse</b>	03/12/2022	<b>Vielfalt</b>	NA
<b>Interner Referenzcode</b>	CRY0212.2	<b>N. Karte</b>	NA
<b>Analytische Methode</b>	HPLC - HS - Rev.2	<b>Probenahme</b>	a cura del cliente
<b>Los</b>			

Note

Parameter	% p/p	Methode
CBDV	0.03%	HPLC-UV
CBDA	<0.01%	HPLC-UV
CBGA	<0.01%	HPLC-UV
CBG	0.14%	HPLC-UV
CBD	11.27%	HPLC-UV
THCV	<0.01%	HPLC-UV
CBN	<0.01%	HPLC-UV
d9_THC	0.14%	HPLC-UV
d8_THC	<0.01%	HPLC-UV
CBC	0.15%	HPLC-UV
THCA	<0.01%	HPLC-UV
<b>CBD TOTALE</b>	<b>11.27%</b>	<b>CALCOLATO</b>
<b>CBG TOTALE</b>	<b>0.14%</b>	<b>CALCOLATO</b>
<b>THC TOTALE</b>	<b>0.14%</b>	<b>CALCOLATO</b>

ANALYSIERTE PROBE: NA(3.00gr)



Pineto

05/12/2022