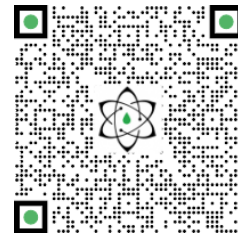




# TECHNISCHER BERICHT

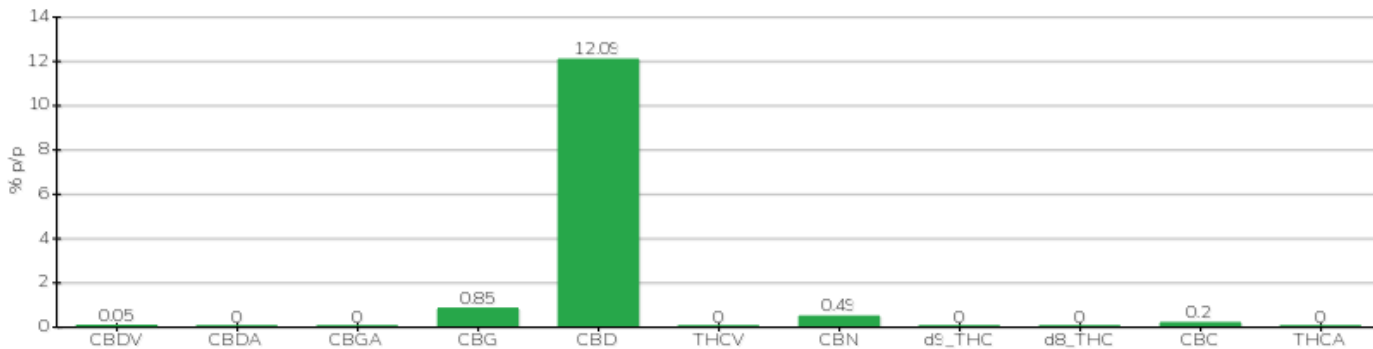


<b>Klient</b>	Crystal srl	<b>Etikett</b>	L0391
<b>Datum der Annahme</b>	09/06/2022	<b>Typ der Probe</b>	semilavorato
<b>Datum der Analyse</b>	10/06/2022	<b>Vielfalt</b>	NA
<b>Interner Referenzcode</b>	CRY0906.2	<b>N. Karte</b>	NA
<b>Analytische Methode</b>	HPLC - HS - Rev.2	<b>Probenahme</b>	a cura del cliente
<b>Los</b>			

Note

Parameter	% p/p	Methode
CBDV	0.05%	HPLC-UV
CBDA	<0.01%	HPLC-UV
CBGA	<0.01%	HPLC-UV
CBG	0.85%	HPLC-UV
CBD	12.09%	HPLC-UV
THCV	<0.01%	HPLC-UV
CBN	0.49%	HPLC-UV
d9_THC	<0.01%	HPLC-UV
d8_THC	<0.01%	HPLC-UV
CBC	0.20%	HPLC-UV
THCA	<0.01%	HPLC-UV
<b>CBD TOTALE</b>	<b>12.09%</b>	<b>CALCOLATO</b>
<b>CBG TOTALE</b>	<b>0.85%</b>	<b>CALCOLATO</b>
<b>THC TOTALE</b>	<b>&lt;0.01%</b>	<b>CALCOLATO</b>

ANALYSIERTE PROBE: NA(3.00gr)



Pineto

13/06/2022