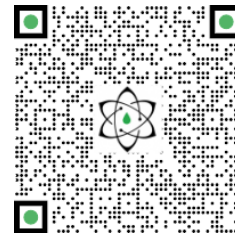




TECHNISCHER BERICHT

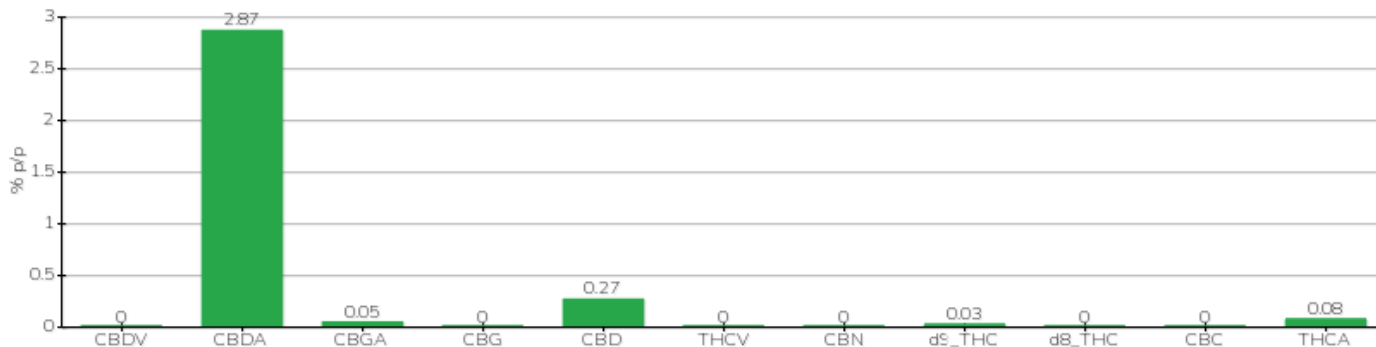


Klient	Crystal srl	Etikett	L0363A
Datum der Annahme	10/03/2022	Typ der Probe	inforescenza
Datum der Analyse	10/03/2022	Vielfalt	Finola
Interner Referenzcode	CRY1003.7	N. Karte	B36408201800003
Analytische Methode	HPLC - HS - Rev.2	Probenahme	a cura del cliente
Los	FNL-L035-05		

Note

Parameter	% p/p	Methode
CBDV	<0.01%	HPLC-UV
CBDA	2.87%	HPLC-UV
CBGA	0.05%	HPLC-UV
CBG	<0.01%	HPLC-UV
CBD	0.27%	HPLC-UV
THCV	<0.01%	HPLC-UV
CBN	<0.01%	HPLC-UV
d9_THC	0.03%	HPLC-UV
d8_THC	<0.01%	HPLC-UV
CBC	<0.01%	HPLC-UV
THCA	0.08%	HPLC-UV
CBD TOTALE	2.79%	CALCOLATO
CBG TOTALE	0.05%	CALCOLATO
THC TOTALE	0.10%	CALCOLATO

ANALYSIERTE PROBE: Finola(3.00gr)



Pineto

15/03/2022