

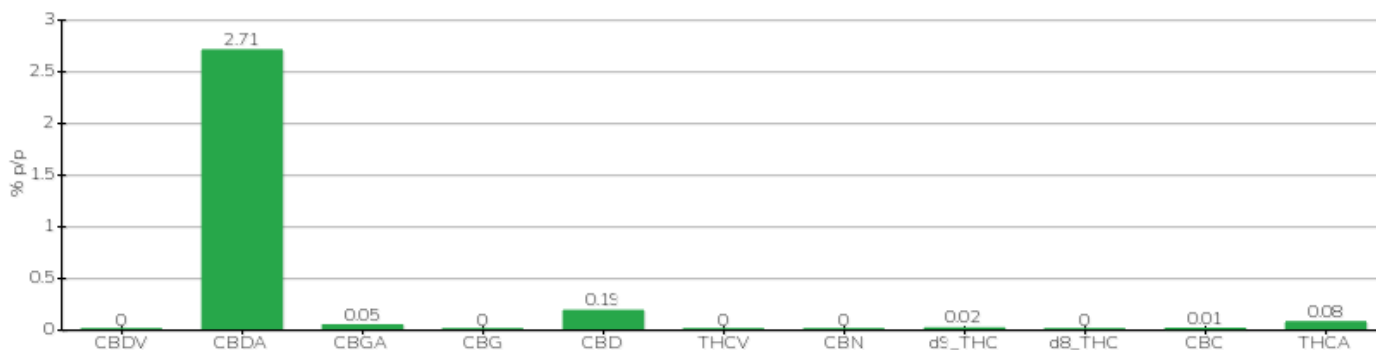
# TECHNISCHER BERICHT

<b>Klient</b>	Crystal srl	<b>Etikett</b>	L0361A
<b>Datum der Annahme</b>	10/03/2022	<b>Typ der Probe</b>	inforescenza
<b>Datum der Analyse</b>	10/03/2022	<b>Vielfalt</b>	Silvana
<b>Interner Referenzcode</b>	CRY1003.5	<b>N. Karte</b>	1074100849145
<b>Analytische Methode</b>	HPLC - HS - Rev.2	<b>Probenahme</b>	a cura del cliente
<b>Los</b>	SLV-L032-02		

**Note**

Parameter	% p/p	Methode
CBDV	<0.01%	HPLC-UV
CBDA	2.71%	HPLC-UV
CBGA	0.05%	HPLC-UV
CBG	<0.01%	HPLC-UV
CBD	0.19%	HPLC-UV
THCV	<0.01%	HPLC-UV
CBN	<0.01%	HPLC-UV
d9_THC	0.02%	HPLC-UV
d8_THC	<0.01%	HPLC-UV
CBC	<0.01%	HPLC-UV
THCA	0.08%	HPLC-UV
<b>CBD TOTALE</b>	<b>2.57%</b>	<b>CALCOLATO</b>
<b>CBG TOTALE</b>	<b>0.05%</b>	<b>CALCOLATO</b>
<b>THC TOTALE</b>	<b>0.09%</b>	<b>CALCOLATO</b>

ANALYSIERTE PROBE: Silvana(3.00gr)



Pineto

15/03/2022